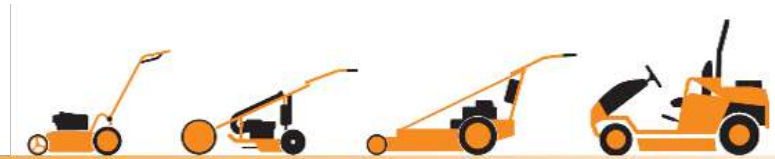




AS Motor ride-on Allmäher

Product Presentation – AS Sherpa



HOCHGRAS PERFORMANCE

MADE IN GERMANY

AS Sherpa – table of contents



Tip: You can navigate in the document via mouse-over click – click page number and click www.as-motor.de to return to the table of contents.

AS Sherpa device concept

- Main features and main arguments p. 4
- Model overview p. 5
- Device structure p. 7
- Application areas / target groups p. 10

AS Sherpa engine

- Overview p. 12
- Engine technology p. 13
- Fuel tank p. 14
- Air filter / engine oil p. 15

AS Sherpa drive

- Overview p. 17
- Front axle p. 18
- Steering p. 19
- Rear axle p. 20
- Hydrostatic drive p. 21

AS Sherpa mower deck

- Overview p. 23
- Blade system / grass placement p. 24
- Suspension / height adjustment p. 25
- Engagement mechanism / safety p. 26

AS Sherpa operating elements

- Overview p. 28
- Overview of operating elements p. 29
- Seat and seat spring package p. 30
- Drive lever and throttle lever p. 31

AS Sherpa RC

- Overview p. 33
- Functional principle – Sherpa RC p. 34
- Application areas – Sherpa RC p. 36
- Safety concept – Sherpa RC p. 38
- Operation – Sherpa RC p. 39

AS Sherpa accessories / technical data

- Accessories p. 42
- Technical data p. 45

AS Sherpa device concept

Main features and main arguments

Model overview / device structure

Application areas / target groups



HOCHGRAS PERFORMANCE

MADE IN GERMANY

AS Sherpa – device concept

Main features and main arguments 1/1



Comfortable & easy to use

Safe and professional



Maximum slope and off-road suitability

Surfing mowing-deck

AS Sherpa – device concept

Model overview Sherpa 2WD



- AS 915 Sherpa 2WD with hydrostatic rear wheel drive, closed, surfing mowing deck and ergonomic seating position. The entry into the Sherpa class, ideal for flat, angled mowing areas with growth up to 120 cm
- AS 920 Sherpa 2 WD with hydrostatic rear wheel drive, closed, surfing mowing deck, ergonomic seating position and safety bar. Ideal for flat and angled mowing areas, but also for slight slopes with growth up to 150 cm



AS Sherpa – device concept

Model overview Sherpa 4WD



- AS 940 Sherpa 4WD with hydrostat, 4-wheel drive, closed, surfing mower deck and ergonomic seating position. Ideal for slopes and growth up to 150 cm
- AS 940 Sherpa 4WD with hydrostat, 4-wheel drive, XL tyres for more ground clearance, closed, surfing mowing deck and ergonomic seating position. Ideal for uneven terrain and slopes and growth up to 150 cm
- AS 940 Sherpa 4WD RC with hydrostat, 4-wheel drive, XL tyres for more ground clearance, closed, surfing mower deck, ergonomic seating position and remote control. Ideal for uneven, steep terrain and slopes with growth up to 150 cm. The operator has the choice between riding up and mowing or mowing by radio remote control



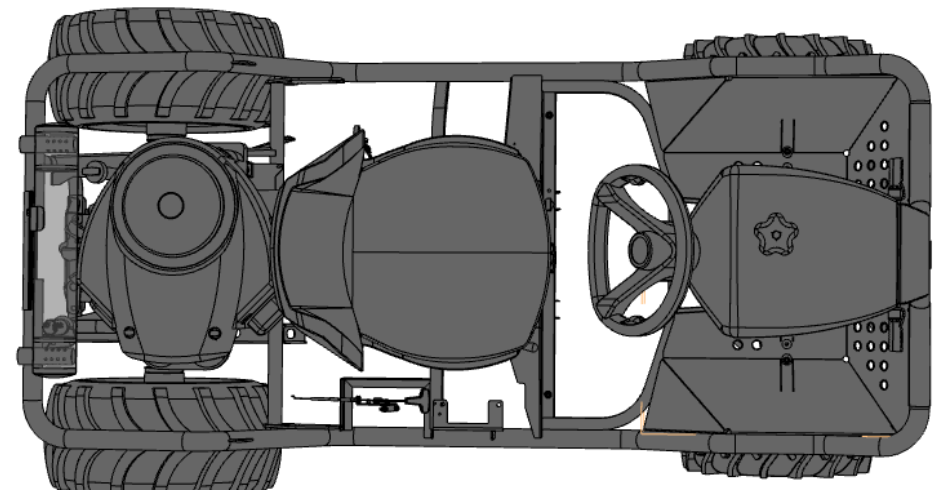
AS Sherpa – device concept

Device structure 1/3



- Perimeter, stable and self-supporting tube frame
- Entire body of stable steel – galvanised and powder-coated.
- Galvanised steel plate on front deflector, Aluminium plate on side cladding and floor panel
- In spite of high-quality materials and stability, designed with focus on lightweight construction – for optimal performance on extreme slopes and good handling
- Stable, folding safety bracket

- ✓ High stability and torsional rigidity at heavy load
- ✓ Aluminium plate at points subject to particular stress – for maximum stability
- ✓ Optimal power-to-weight ratio with concurrent high stability of body and chassis.
- ✓ With bracket folded in, vehicle height is 1 meter



AS Sherpa – device concept

Device structure 2/3



- Ratio of 22.4 hp to 290 kg empty weight (AS 940 Sherpa 4WD).
- Perfect sitting position and optimal weight distribution.
- Low weight facilitates uphill travel
- Low power-to-weight ratio of 13 kg/hp (assuming maximum engine power, even 10.7 kg/hp)
- Less weight means less downhill push, slipping is safely avoided

- ✓ Weight-optimised with ample power reserves.
- ✓ Optimal terrain geometry for comfortable sitting and comfortable work: Low centre of gravity for maximum cross-country mobility and safety.
- ✓ More traction and less load for the transmission – low transmission temperature.
- ✓ The lightest high-grass mower on the market and thus even more suitable for working on slopes – less weight = less downhill force



AS Sherpa – device concept

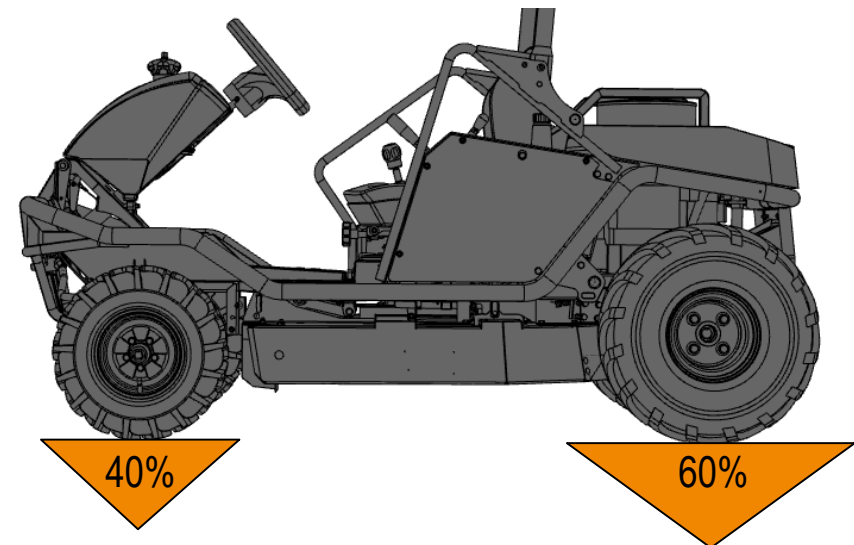
Device structure 3/3



- Cross-country mobility through perfect vehicle geometry, weight distribution and ground clearance
- Approach angle in the front at more than 60°
- Approach angle in the rear at more than 40°
- Optimal weight distribution
- Ground clearance 50-105 mm (920 2WD; 940 4WD) and 80-135 mm (940 4WD XL; 940 4WD RC) and surfing mower deck



- ✓ Best sitting position with low centre of gravity on steep slopes with unrivalled legroom
- ✓ Steep approach angles enable driving in on steep slopes without having to sit on the mower
- ✓ Optimal weight distribution offers ideal traction
- ✓ High ground clearance and surfing mower deck for uneven terrain and for driving over hilltops



AS Sherpa – device concept

Application areas 1/1



AS PRODUCTS

	Maximum work rate in m ² /hour (V _{Max} x cutting width)	Maximum undergrowth height in cm
RIDE-ON ALLMÄHER		
AS 915 Sherpa 2WD	9.450	120
AS 920 Sherpa 2WD	9.450	150
AS 940 Sherpa 4WD	5.500	150
AS 940 Sherpa 4WD XL and RC	6.000	150

AS PRODUCTS

	Gradient suitability Level > rising > very steep	Professional use	Mowing deck	Drive
RIDE-ON ALLMÄHER				
AS 915 Sherpa 2WD		■	Mulching with rear discharge	Rear wheel drive hydrostatic
AS 920 Sherpa 2WD		■	Mulching with rear discharge	Rear wheel drive hydrostatic
AS 940 Sherpa 4WD		■	Mulching with rear discharge	All-wheel drive hydrostatic
AS 940 Sherpa 4WD XL and RC	(RC)	■	Mulching with rear discharge	All-wheel drive hydrostatic

■ Suitable

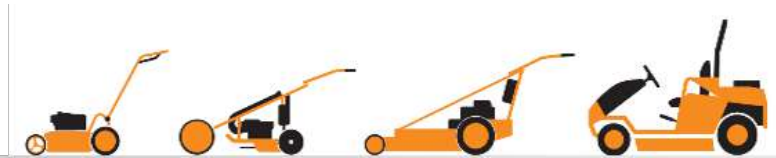
■ Recommended

AS Sherpa – engine

Overview

Engine technology, fuel tank

Fuel tank, air filter



HOCHGRAS PERFORMANCE

MADE IN GERMANY

AS Sherpa – engine

Overview 1/1



- AS 920 Sherpa and AS 940 Sherpa: Briggs & Stratton 4-stroke 2-cylinder OHV engine, Professional Series 8270 with ample 724 ccm displacement and 22.4 hp (16.5 kW) rated power at 3,300 rpm.
- AS 915 Sherpa: Briggs & Stratton 4-stroke 2-cylinder engine of the professional 7220 series with 656 ccm displacement and 18.0 HP (13.3 kW) rated power at 3,300 rpm.
- Oil and fuel pump, oil pressure switch and electric starter
- Separate cooling air circulation for engine and transmission



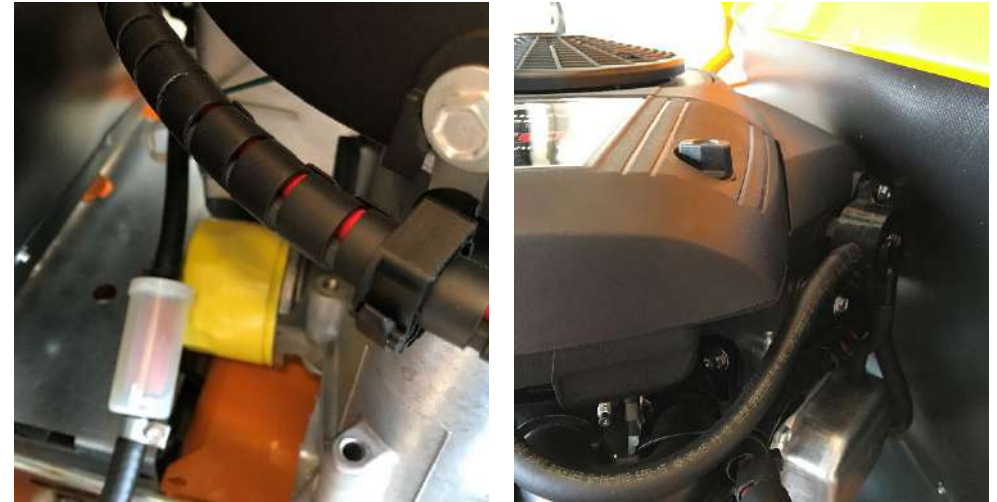
- ✓ Strong engine suitable for working on slopes with abundant power for mowing and for use on rugged terrain
- ✓ Ideal accessibility for daily maintenance tasks
- ✓ High fuel reserve and reduced fuel consumption thanks to high power reserves for long work deployments without an intermediate stop
- ✓ Optimised cooling for consistently high performance and long service life of the engine

AS Sherpa – engine

Engine technology 1/1



- Pressure lubrication similar to a vehicle engine for continuous delivery of oil under pressure to engine components in the crankcase for maximum lubrication
- Grey cast iron cylinder sleeve for long service life and minimal oil consumption and OHV (OverHead Valve) technology
- Fuel pre-filter with transparent case
- Electric start with choke and maintenance-free battery in protected position



- ✓ Optimally suited for working on slopes and long engine service life with minimal oil consumption
- ✓ OHV – optimised performance, long engine service life and low fuel consumption
- ✓ Pre-filter protects the engine from contaminants in the fuel
- ✓ Magnetron ® electronic ignition system – ensures easy start and it is maintenance-free

AS Sherpa – engine

Fuel tank 1/1



- 15-litre tank capacity (normal petrol / regular Gasoline)
- Triangular shape and withdrawal at the lowest point of the tank with reserve function (reserve position / 1 litre)
- The tank is positioned in the front of the vehicle for ideal weight distribution
- Ergonomic tank shape for maximum legroom
- Clear separation of tank and engine



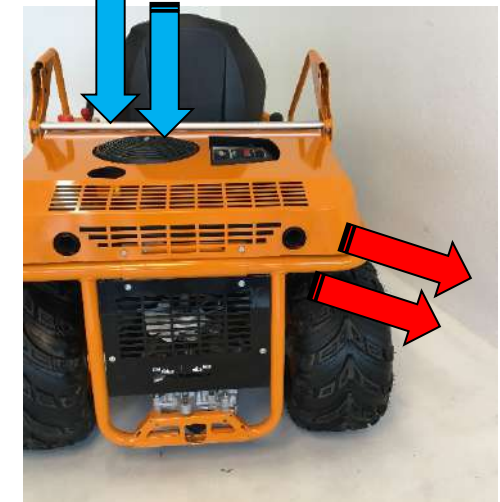
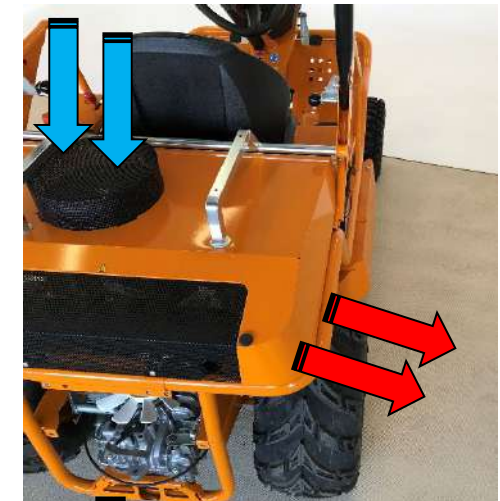
- ✓ Large tank volume for long deployments
- ✓ Triangular shape and reserve function for complete use of the fuel and for high operational safety
- ✓ Optimal weight distribution through tank position for maximum traction in 4WD operation
- ✓ Thanks to the clear separation from the engine there is no heat load of the tank / fuel

AS Sherpa – engine

Air filter / engine oil 1/1



- Two-stage filter system with washable foam pre-filter and paper air filter cartridge as main filter
- Easy accessibility for cleaning and replacement
- Optimised air circulation (fresh air inlet on top – warm air outlet laterally downward) and integrated pre-filter through grille in the engine cover (not AS 915 Sherpa)
- Fully synthetic engine oil (SAE 5W-50) for top performance



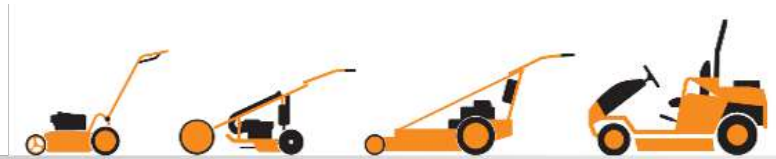
- ✓ Improved protection against contaminated air in the engine (dual element) for consistent high-performance
- ✓ Long maintenance intervals and optimal accessibility for standard maintenance tasks
- ✓ Optimal air circulation and easy separation of suctioned-in leaves and grass
- ✓ High temperature range of the engine oil – same oil as in the transmission – special additional oil is not necessary

AS Sherpa – drive

Overview

Front axle, steering

Rear axle, hydrostatic drive



HOCHGRAS PERFORMANCE

MADE IN GERMANY

AS Sherpa – drive

Overview 1/1



- Pendulum bearing supported front axle with 4WD (940 4WD, 940 4WD XL and 940 4WD RC)
- Tight turning radius and automatic straight-ahead course
- Different tyre variants – depending on the model
- Rear axle with high-performance hydrostatic drive
- Integrated safety brake/parking brake – disc brake + zero-position spring.
- Limited slip differential for all models



- ✓ Contiguous ground contact through pendulum axle
- ✓ Optimal directional stability / and climbing capacity through limited slip differential and 4WD
- ✓ Tyre variants for different requirements
- ✓ Hydrostatic drive with high-performance cooling
- ✓ High safety through integrated / automatic brake
- ✓ Optimal traction through limited slip differential

AS Sherpa – drive

Front axle 1/1



- Pendulum bearing supported portal front axle (940 4WD, 940 4WD XL, 940 4WD RC) with hydrostatic drive of the front axle
- Pendulum axle without drive (915 2WD, 920 2WD)
- Tyre variants: SC (Snow-Crip) 15x5.00-6 for 940 4WD, 920 2WD and 915 2WD; AS (Acker-Stollen (field studs)) 4.80/5.00-8 for 940 4WD XL and 940 4WD RC
- Permanent 4WD but no 100% lock



- ✓ Contiguous ground contact through pendulum axle
- ✓ Higher ground clearance because there is no Cardan shaft – mechanical engagement is not required
- ✓ Best climbing capacity through 4WD but turf is protected when cornering
- ✓ High traction thanks to optimal weight distribution on rear and front axle

AS Sherpa – drive

Steering 1/1



- Ergonomic steering wheel and minimal steering forces
- Front axle geometry optimised for automatic straight-ahead course through lifting of the wheels
- Regulation of wheel speed at steering deflection
- Tight turning radius (140 cm for 940 4WD; 120 cm for 940 4WD XL, 940 4WD RC and 65 cm for 920 2WD, 915 2WD)



- ✓ Steering wheel does not lock – minimal steering forces
- ✓ Automatic straight-ahead course for precise bout tracking when working on large areas
- ✓ No disproportionate forward motion at steering deflection and thus turf is protected
- ✓ Turning radius almost the same as non 4WD devices thanks to adaptive all-wheel lock

AS Sherpa – drive

Rear axle 1/1



- Robust rear axle with hydrostatic drive and limited slip differential (for all models)
- Tyre variants: ATV (All-Terrain-Vehicle) 18x9.50-8 for 940 4WD and 920 2WD and 915 2WD; AS (Acker-Stollen (field studs)) 20x10-00-8 for 940 4WD XL and 940 4WD RC
- Drive speed, forward: 0-10.5 km/h (920 2WD and 915 2WD), 0-6.2 km/h (940 4WD); 0-6.7 (940 4WD XL and 940 4WD RC)
- Drive speed, reverse: 0-8.2 km/h (920 2WD), 0-6.0 km/h (940 4WD); 0-6.5 (940 4WD XL and 940 4WD RC)

- ✓ Robust configuration for rugged deployment
- ✓ Problem-free continuous use, thanks to robust design and low gear oil temperature through adapted speed
- ✓ Safe stopping / parking and start-up of the mower is always ensured, particularly on the slope

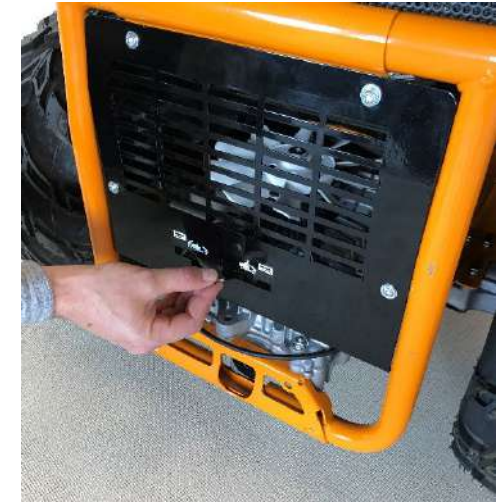


AS Sherpa – drive

Hydrostatic drive 1/1



- Robust hydrostatic drive with large cooling blower
- Cooling air supply of the transmission is separated from the engine
- Easy access to unlock the transmission
- Integrated safety brake/parking brake – disc brake + zero-position spring. Purely mechanical – the engine does not have to be running – downhill speed via transmission
- High performance at low weight – low oil temperature – long service life



- ✓ Optimal cooling for intensive continuous use without overheating and transmission damage
- ✓ Easy unlock for moving the machine in enclosed spaces
- ✓ High safety through integrated / automatic brake and 100% braking capacity even if the engine is not running
- ✓ Fully synthetic oil, SAE 5W-50 - the same oil that is used for the engine

AS Sherpa – mower deck

Overview

Blade system / grass placement

Suspension / height adjustment

Engagement mechanism / safety



HOCHGRAS PERFORMANCE

MADE IN GERMANY

AS Sherpa – mower deck

Overview 1/1



- The Sherpa mower deck is made of steel and has stable strutting.
- 90 cm cutting width with closed mower deck, AS cross-blade system, reversible double-sided blades and central grass placement between the wheels
- Side skids and surfing mower deck suspension
- Manual central height adjustment in 5 levels (Sherpa RC with variable height adjustment)
- Safety via mechanical shut-down

- ✓ Cuttings remain longer in the mow unit bonnet, are discharged to the rear and they remain between the wheels
- ✓ High work rates up to 5500 m²/h and high grass to 150 cm are possible
- ✓ Surfing mower deck can give way upward
- ✓ Safety precautions are functional even if the engine is not running, thanks to mechanical shut-off

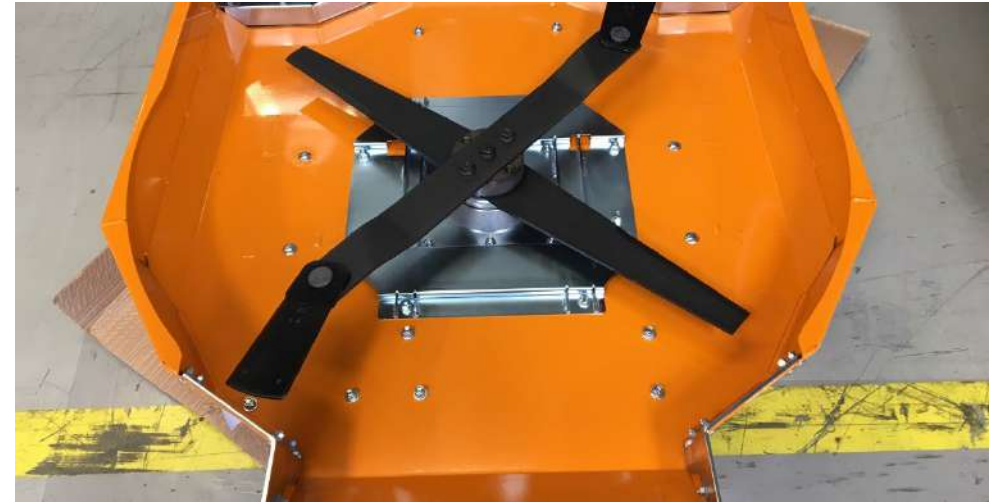


AS Sherpa – mower deck

Blade system / grass placement 1/1



- 90 cm cutting width
- Closed mower deck with AS cross-blade system, reversible double-sided blades and central grass placement between the wheels
- Mulching blade and blade bar at a 90° angle
- Blades cut growth in two planes
- Blade bars with movable bearing support and replaceable reversible double-sided blades that damp brief load peaks with deflection



- ✓ Cuttings remain longer in the mow unit bonnet, are discharged to the rear and they remain between the wheels
- ✓ The device does not run over the cuttings – ideal traction
- ✓ High work rates up to 5500 m²/h and high grass to 150 cm are possible
- ✓ Cuttings are chopped into mulch
- ✓ Long service life, long maintenance intervals

AS Sherpa – mower deck

Suspension / height adjustment 1/1



- Side skids and surfing mower deck suspension
- Manual central height adjustment in 5 levels
- Ease of motion through special kinematics
- Cutting height: 50-105 mm (915 2WD / 920 2WD / 940 4WD)
- Cutting height: 80 -135 mm (940 4WD XL / 940 4WD RC)
- Transport position: 130 mm (915 2WD / 920 2WD / 940 4WD)
- Transport position 160 mm (940 4WD XL / 940 4WD RC)



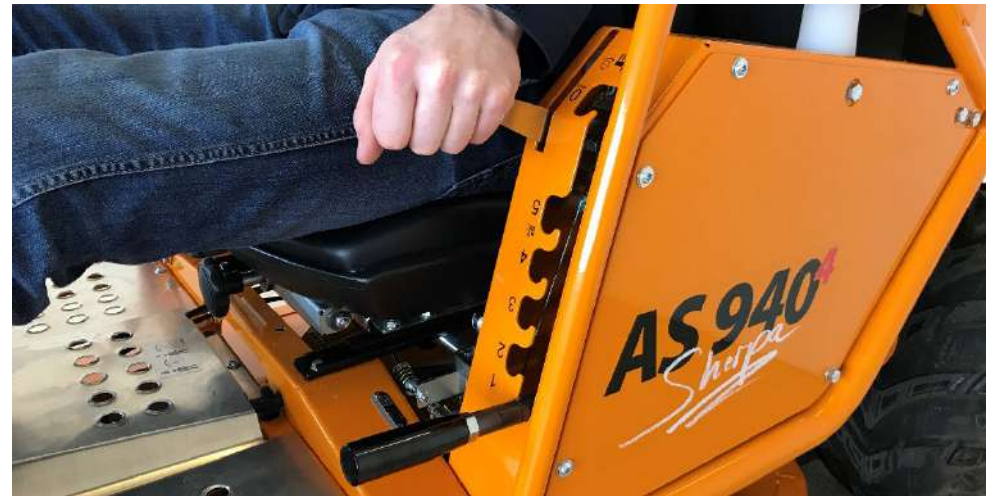
- ✓ Mower deck can give way upward – e.g. when driving over hilltops and on uneven terrain – the blade does not touch the ground – no damage
- ✓ Easy mower deck lift-out through special kinematics
- ✓ Different cutting heights and transport position
- ✓ It is not possible to start the mower deck in transport position – high level of safety when changing over and loading

AS Sherpa – mower deck

Engagement mechanism / safety 1/1



- Mechanical engagement of the mower deck/ – engagement element is conveniently positioned next to the height adjustment element (except for AS 940 4WD RC)
- Safety via mechanical shut-down: 1. Via seat activation and 2. Via transport position of the mower deck
- Mower deck also switches off when the engine is at a standstill
- Additional seat contact switch and blade brake for automatic stopping of the engine



- ✓ Safety precautions are functional even if the engine is not running, thanks to mechanical shut-off
- ✓ Multiple safety precautions
- ✓ Effective blade brake for blade shut-down in seconds

AS Sherpa – operating elements

Overview

Overview of operating elements

Seat and seat spring package

Drive lever and throttle lever



HOCHGRAS PERFORMANCE

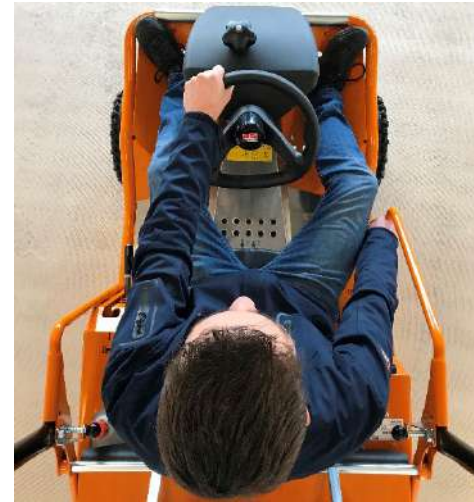
MADE IN GERMANY

AS Sherpa – operating elements

Overview 1/2



- Ergonomic sitting position in adjustable bucket seat
- Driver sits deep "in" the machine
- The steering wheel flattened on the bottom and the slender tank shape ensures maximum leg room and freedom of movement
- Logical and ergonomic arrangement of all operating elements
- Minimal operating forces for height adjustment thanks to special kinematics



- ✓ Due to the sitting position and the support possibility with the feet, the driver always has a safe drive feel.
- ✓ Easy and logical operation of all operating elements
- ✓ High-level safety and driver protection through ergonomic arrangement of the operating elements

AS Sherpa – operating elements

Overview of operating elements 2/2



- Foot pedal, limited slip differential
- Steering wheel
- Cutting height adjustment element
- Mower unit engagement
- Locking mechanism, safety bracket left
- Foot pedal emergency brake (places drive lever in middle position, not at 915 Sherpa)
- Ignition key
- Drive lever
- Throttle lever / choke
- Locking mechanism, safety bracket right



AS Sherpa – operating elements

Seat and seat spring package 1/1



- Variable adjustment bucket seat with innovative suspension system and shock-absorber
- Ergonomic sitting position, regardless of body size and build.
- Easy adjustment forward and back
- Individual adjustment of spring stiffness to the weight of the driver
- The seat spring package is optionally available for Sherpa 915



- Bucket seat for optimal lateral hold on the slope
- Suspension cylinder



- Adjustment of spring stiffness
- Adjustment of the sitting position

AS Sherpa – operating elements

Drive lever and throttle lever 1/1



- Ergonomic drive lever
- Traction drive control exclusively via drive lever – no foot pedal activation
- Legs are free for support when working on slopes
- Middle position automatically engages the brake
- Throttle lever and choke arranged in one lever (915 Sherpa separate arrangement)
- Lower-most position – choke
- Uppermost position – idle position



- Drive lever position – reverse
- Drive lever position – reverse



- Operating hour meter
- Choke and throttle lever

AS Sherpa – RC

Overview

Functional principle, application areas

Safety concept, operation



HOCHGRAS PERFORMANCE

MADE IN GERMANY

AS Sherpa – RC

Overview 1/1



- The Sherpa RC combines the advantages of the 940 4WD XL with the advantages of remote control
- The device can be run and can mow in RC mode or in MC (Manual Control) mode
- Extension of the application area through RC and more safety in rough terrain and for passages that are difficult to access
- Easy and pure mechanical changeover from MC to RC via Bowden cables



- ✓ Even more efficiency through better suitability for working on slopes in RC mode (inclination up to 33 degrees and 45 degrees uphill/downhill)
- ✓ Deployment in hazardous areas possible (dust, wasps, etc.)
- ✓ Mowing tasks can also be executed by persons with physical disabilities and thus reintegration of employees for mowing tasks is also possible



AS Sherpa – RC

Functional principle Sherpa RC 1/2



- The basis for the 940 4WD RC is the 940 4WD XL
- The device can be operated in RC mode via additional servomotors and a professional remote control unit
- Servomotors for RC mode: Steering, mower deck height adjustment, drive lever, limited slip differential
- The device can be controlled in RC (Remote Control) mode or in MC (Manual Control = ride-on operation) mode



- ✓ Significant extension of the machine's application spectrum for extreme implementation conditions
- ✓ Simple technology for implementation of remote control
- ✓ Moreover, both control modes are possible – no restriction for operation in MC mode



AS Sherpa – RC

Functional principle Sherpa RC 2/2



- Changeover from MC to RC via pure mechanical changeover and Bowden cables
- Additional control unit and wireless receiver on the vehicle
- Control of engine start (ignition), cutting height, mower deck start (blade clutch) only still possible via remote control
- Control of petrol, traction drive/brake, limited-slip differential and steering via remote control or the usual operating elements in MC mode



- ✓ Fast and uncomplicated changeover from MC mode to RC mode and back is possible
- ✓ A complex and possibly vulnerable electronic control system is not necessary
- ✓ Coherent operating strategy with well thought-out safety concept
- ✓ Remote control is operated with standard batteries – operational at all times

AS Sherpa – RC

Application areas – Sherpa RC 1/2



Extension of the application area through RC:

- More safety on rough terrain and on passages that are difficult to access
- More convenience through remote control
- Application areas with hazard potential can be worked through remote control
- Mowing tasks can also be executed by persons with physical disabilities



- ✓ Safe work on steep slopes.
- ✓ Convenient operation from a safe distance, without exposure to dust, noise or exhaust fumes.
- ✓ Mowing even in bad weather, on a loose or wet substrate and on terrain that is extremely uneven.
- ✓ Working under trees and bushes, along hedges, mowing stinging nettle and in the vicinity of wasp nests.
- ✓ Can be used for the re-integration of employees



AS Sherpa – RC

Application areas – Sherpa RC 2/2



Rain & bad weather



Sand wasps



Rough terrain



Higher slope gradients



More comfort (vibration)



Dust & emissions



AS Sherpa – RC

Safety concept – Sherpa RC 1/1



"Emergency stop" in RC mode means:

- Engine and blades will be shut-down
- Traction drive goes into zero position, parking brake is activated
- Steering wheel, cutting height adjustment and limited-slip differential are deactivated

When does the machine go into emergency stop?

- When the driver is sitting in the driver seat
- When the transmitter is inserted in the docking station
- When the permissible angle of inclination exceeded (> 60 degrees)
- When the radio connection is lost
- Faulty control signals (e.g. cable break)

The safety concept in manual mode corresponds to the safety concept of the "normal" AS Sherpa (with a few exceptions)



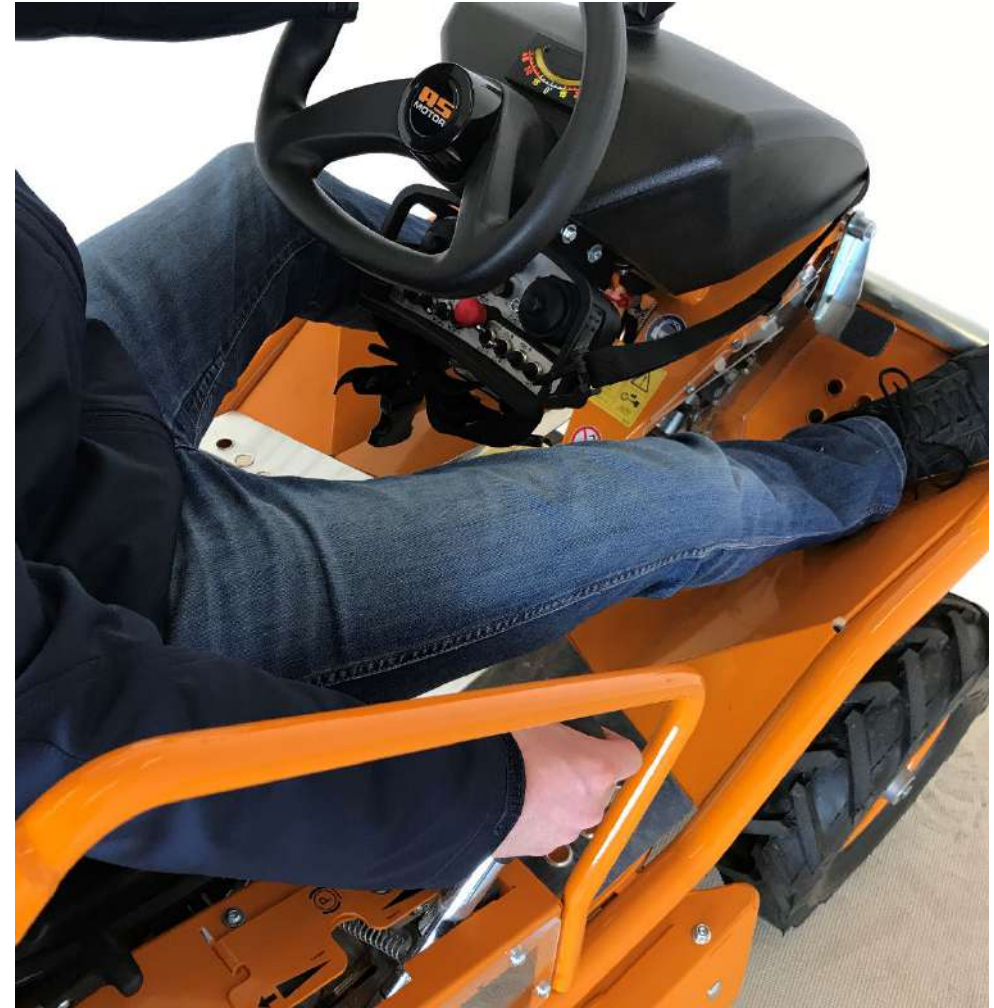
AS Sherpa – RC

Operation – Sherpa RC 1/2



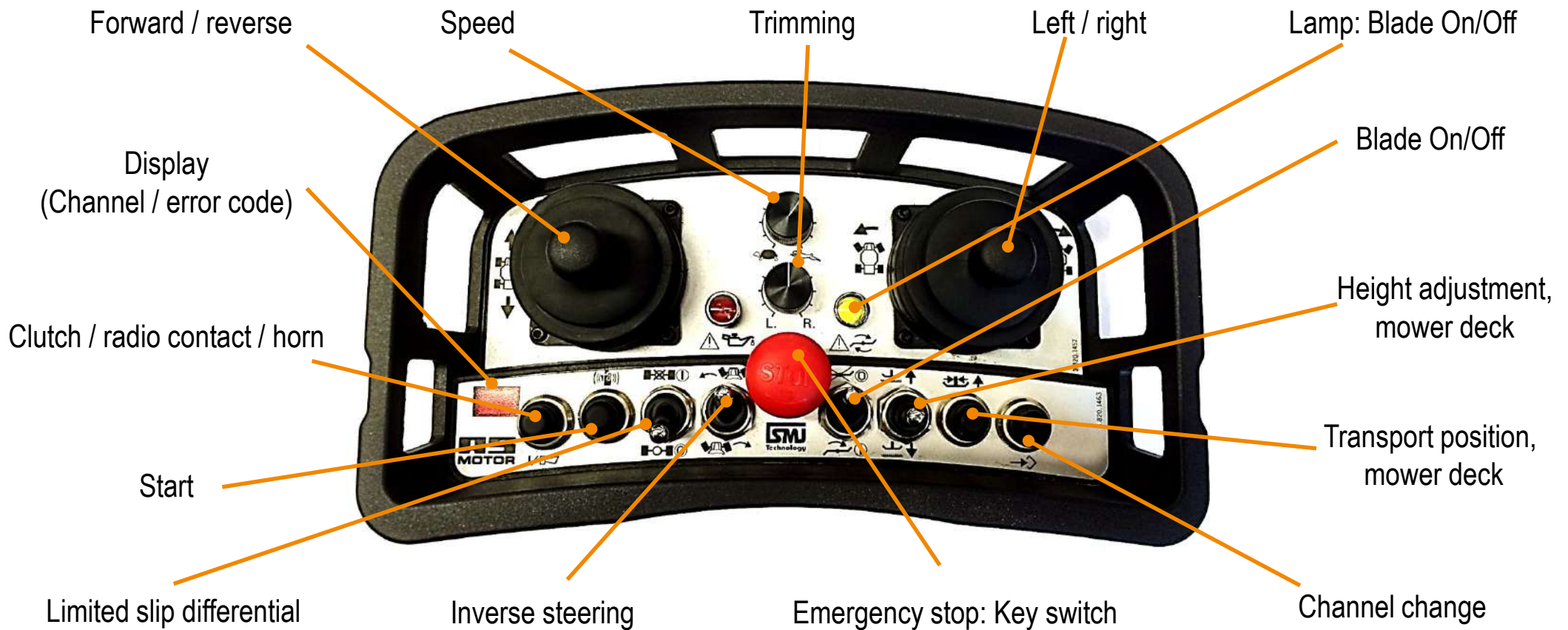
Particularities of operation in RC mode:

- Engine On/Off only via remote control
- Drive mode forward-reverse is variable via remote control or drive lever in MC mode
- Joystick goes into brake position – to "neutral" (joystick released) automatically in MC mode and RC mode
- Adjustment of the final speed via potentiometer (tortoise - hare) on the remote control or via drive lever in MC mode
- When steering via joystick inverse steering is possible
- Trimming of the steering (straight-ahead course) through potentiometer via remote control is possible
- Mower deck height adjustment only via remote control and variably adjustable (all other models in 5 levels)
- Button for "Mower deck transport position" via remote control
- Button for "Limited slip differential" via remote control and pedal
- Gas lever with choke position manual



AS Sherpa – RC

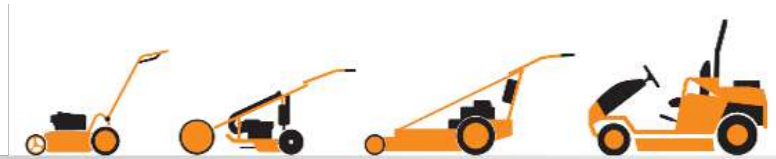
Operation – Sherpa RC 2/2



AS Sherpa accessories / technical data

Accessories

Technical data



HOCHGRAS PERFORMANCE

MADE IN GERMANY

AS Sherpa – accessories

Overview 1/3



- AS-Motor offers a variety of accessories for the ride-on Allmähers of the Sherpa family
- For the most part, the accessories from AS-Motor are developed and built directly in the plant
- For example, trailer, hitch, snow blade, mulch kit and much more



- ✓ Individual adaptation and extension of the vehicle to meet the respective requirements
- ✓ 100% custom-tailored for the devices from AS-Motor



AS Sherpa – accessories

Overview 2/3



Accessories	915 Sherpa 2WD	920 Sherpa	940 Sherpa 4WD	940 Sherpa 4WD XL	940 Sherpa 4WD RC
Trailer	X	X	X	X	X
Trailer hitch	X	X	X	X	X
Snow blade without adapter	X	X	X	X	X
Adapter and operating elements for snow blade	X	X	X	X	X
Adapter and operating elements for snow blade and weather cabine	X	X	X	X	X
Weather cab	X	X	X	X	X
Snow chains	X	X	X		
Seat suspension	X	series	series	series	series

AS Sherpa – accessories

Overview 3/3



Accessories	915 Sherpa 2WD	920 Sherpa	940 Sherpa 4WD	940 Sherpa 4WD XL	940 Sherpa 4WD RC
Twin wheels, rear	X	X	X		
Larger XL wheels			X	series	series
Lawn kit/mulch kit	X	X	X	X	X
Inclinometer	X	X	X	X	series
Steering wheel knob	X	X	X	X	X
Spacer blade replacement; enables operation without upper mulching blade	X	X	X	X	X
Tyre sealant "Plattfuss-Stop"	X	X	X	X	X

AS Sherpa – technical data

Engine / drive 1/5



Model	915 Sherpa 2WD	920 Sherpa 2WD	940 Sherpa 4WD	940 Sherpa 4WD XL	940 Sherpa 4WD RC
Engine					
Engine, design	2-cyl, 4-stroke OHV engine	2-cyl, 4-stroke OHV engine	2-cyl, 4-stroke OHV engine	2-cyl, 4-stroke OHV engine	2-cyl, 4-stroke OHV engine
Manufacturer	Briggs & Stratton	Briggs & Stratton	Briggs & Stratton	Briggs & Stratton	Briggs & Stratton
Type	Professional Series 7220, V-Twin	44 Professional Series 8, V-Twin	44 Professional Series 8, V-Twin	44 Professional Series 8, V-Twin	44 Professional Series 8, V-Twin
Displacement in cm ³	656	724	724	724	724
Rated power (kW / hp)	13.3 / 18.0	16.5 / 22.4	16.5 / 22.4	16.5 / 22.4	16.5 / 22.4
Max. power (kW / hp)	16.4 / 22.0	20.1 / 27.0	20.1 / 27.0	20.1 / 27.0	20.1 / 27.0
Engine speed					
Rated capacity in rpm	3300	3300	3300	3300	3300
Starting device	Electric start	Electric start	Electric start	Electric start	Electric start
Drive					
Traction drive, type	Rear wheel drive	Rear wheel drive	Permanent 4WD	Permanent 4WD	Permanent 4WD

AS Sherpa – technical data

Drive / mower deck 2/5



Model	915 Sherpa 2WD	920 Sherpa 2WD	940 Sherpa 4WD	940 Sherpa 4WD XL	940 Sherpa 4WD RC
Drive, rear	Hydrostatic transmission with differential lock	Hydrostatic transmission with differential lock	Hydrostatic transmission with differential lock	Hydrostatic transmission with differential lock	Hydrostatic transmission with differential lock
Drive front	No drive	No drive	Pendulum portal axle with two hydraulic motors and upright shaft	Pendulum portal axle with two hydraulic motors and upright shaft	Pendulum portal axle with two hydraulic motors and upright shaft
Forward speed in km/h	0 - 10.5	0 - 10.5	0 - 6.2	0 - 6.7	0 - 6.7
Reverse speed in km/h	0 - 8.2	0 - 8.2	0 - 6.0	0 - 6.5	0 - 6.5
Turning radius in meters	0.6	0.6	1.4	1.2	1.2
Mower deck					
Cutting device, type	Genuine cross-blade with bolted on reversible, double-sided blades and mulching blade	Genuine cross-blade with bolted on reversible, double-sided blades and mulching blade	Genuine cross-blade with bolted on reversible, double-sided blades and mulching blade	Genuine cross-blade with bolted on reversible, double-sided blades and mulching blade	Genuine cross-blade with bolted on reversible, double-sided blades and mulching blade
Cutting width in cm	90	90	90	90	90

AS Sherpa – technical data

Mower deck / dimensions 3/5



Model	915 Sherpa 2WD	920 Sherpa 2WD	940 Sherpa 4WD	940 Sherpa 4WD XL	940 Sherpa 4WD RC
Cutting height in mm	50 - 105	50 - 105	50 - 105	80 - 135	80 - 135
Transport position in mm	130	130	130	160	160
Number of levels	5	5	5	5	variably adjustable
Drive, cutting tool	V-belts	V-belts	V-belts	V-belts	V-belts
Clutch, cutting tool	Belt clutch	Belt clutch	Belt clutch	Belt clutch	Belt clutch
Growth height	up to approx. 120	up to approx. 150 cm	up to approx. 150 cm	up to approx. 150 cm	up to approx. 150 cm
Dimensions and weights					
Weight in kg	270	280	290	298	325
Operating dimensions L/W/H in cm	191/98/100	191/98/152	191/98/152	191/98/156	191/106/156
Height with folded-in bracket in cm	---	100	100	103	103

AS Sherpa – technical data

Dimensions / operating fluids / emissions 4/5



Model	915 Sherpa 2WD	920 Sherpa 2WD	940 Sherpa 4WD	940 Sherpa 4WD XL	940 Sherpa 4WD RC
Max. trailing load in kg	100	100	100	100	100
Max. drawbar load in kg	25	25	25	25	25
Fill quantities					
Fuel tank (litres / type)	15 / normal petrol	15 / normal petrol	15 / normal petrol	15 / normal petrol	15 / normal petrol
Engine oil (litres / type)	1.9 / 5W-50 fully synthetic	1.9 / 5W-50 fully synthetic	1.9 / 5W-50 fully synthetic	1.9 / 5W-50 fully synthetic	1.9 / 5W-50 fully synthetic
Gear oil (litres / type)	3.9 / 5W-50 fully synthetic	3.9 / 5W-50 fully synthetic	6.8 / 5W-50 fully synthetic	6.8 / 5W-50 fully synthetic	6.8 / 5W-50 fully synthetic
Emissions					
Measured sound power level (dB in accordance with DIN EN 12733)	100.5	99.2	99.2	99.2	99.2

AS Sherpa – technical data

Emissions / tyres / miscellaneous 5/5



Model	915 Sherpa 2WD	920 Sherpa 2WD	940 Sherpa 4WD	940 Sherpa 4WD XL	940 Sherpa 4WD RC
Sound power level at the operating station (dB in accordance with DIN EN 12733)	89.4	90.0	90.0	90.0	90.0
Measurement uncertainty k (dB (A))	2.5	2.5	2.5	2.5	3.0
Tyre designation					
Front	15x5.00-6	15x5.00-6	15x5.00-6	4.80/5.00-8	4.80/5.00-8
Rear	18x9.50-8	18x9.50-8	18x9.50-8	20x10.00-8	20x10-00-8
Stability, transverse (in accordance with the standard measurement method)	18	18	20	21	21 / 33
Stability, uphill / downhill	n/a	n/a	40	40	40 / 45
Housing	Steel	Steel	Steel	Steel	Steel



AS Motor ride-on Allmähers

Thank you for your attention!



HOCHGRAS PERFORMANCE
MADE IN GERMANY